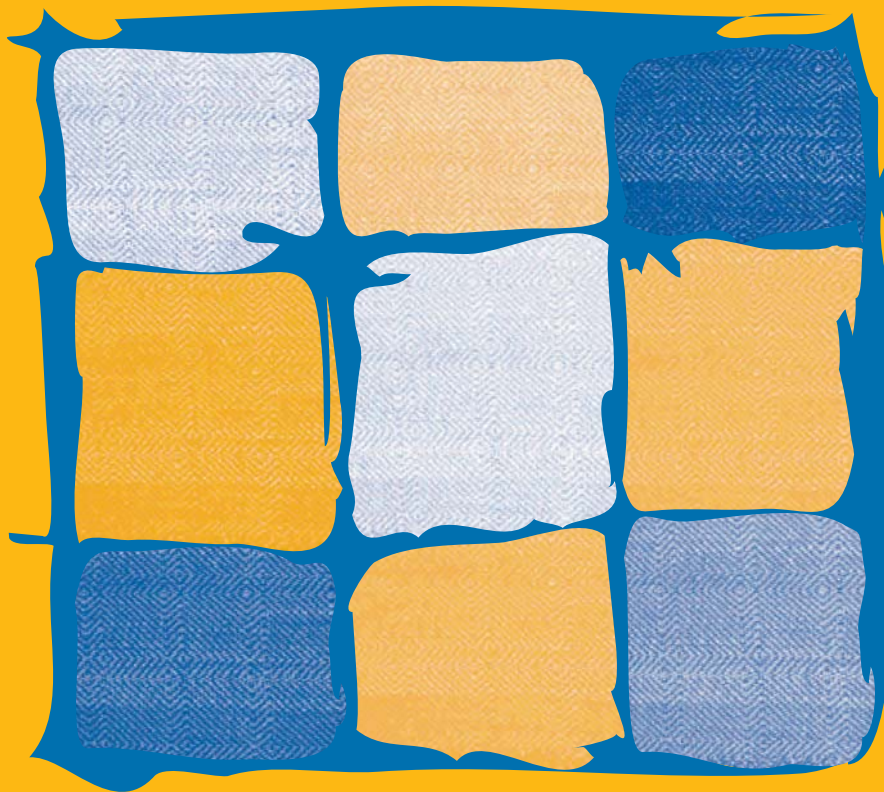


Substance Exposed Newborns: Weaving Together Effective Policy & Practice



SPONSOR

National Abandoned Infants Assistance Resource Center
A Service of the Children's Bureau



CO-SPONSORS

DHHS/ACF/ACYF Children's Bureau
Substance Abuse and Mental Health Services Administration

Conference Program

October 6-7, 2005

**Washington Court Hotel
Washington, DC**



National Abandoned Infants Assistance Resource Center

University of California at Berkeley

1950 Addison Center, Suite 104, #7402

Berkeley, CA 94720-7402

510-643-8390

<http://aia.berkeley.edu>

Acknowledgments



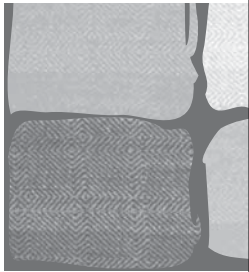
The support, advice, and assistance of a number of individuals were invaluable in the development of this conference. The staff of the National Abandoned Infants Assistance (AIA) Resource Center sincerely appreciates the effort and contributions of the following colleagues and their organizations:

- Sharon Amatetti, Substance Abuse and Mental Health Services Administration
- Patricia Campiglia, Children's Bureau
- Steve Christian, National Conference of State Legislatures
- Sid Gardner, National Center on Substance Abuse and Child Welfare
- Kim Helfgott, National Clearinghouse on Child Abuse and Neglect Information
- Bonnie Connors Jellen, American Hospital Association, Section for Maternal and Child Health
- Alice Kitchen, Kansas City Metropolitan Task Force on Drug Exposed Infants
- Kathy Mitchell, National Organization on Fetal Alcohol Syndrome
- Cathleen Otero, National Center on Substance Abuse and Child Welfare
- Nancy Young, National Center on Substance Abuse and Child Welfare

Thanks to the Robert Wood Johnson Foundation, Substance Abuse Policy Research Program for its financial support of this conference.

We also wish to express our appreciation to the School of Social Welfare at the University of California at Berkeley for its support of our work, and to the DHHS Children's Bureau for their generous support.

Table of Contents



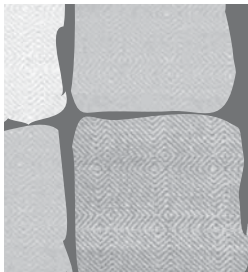
Welcome	1
Who We Are	2
Co-Sponsors and Collaborating Partners	2
General Information	3
Continuing Education Information.....	4
Conference-At-A-Glance.....	5
Conference Agenda	6
Keynote Speakers.....	13
Presenters and Moderators.....	15
National Exhibitors.....	22
Conference and Meeting Space.....	23
Notes	24

Welcome

The National Abandoned Infants Assistance Resource Center, together with the U.S. Department of Health and Human Services' Children's Bureau and the Substance Abuse and Mental Health Services Administration, extends a warm welcome to our conference. We are enthusiastic about this opportunity to focus our attention on the needs and circumstances of substance exposed newborns and their families; to showcase exemplary multidisciplinary collaborative efforts, policies, and practices from around the nation; and to transfer this knowledge to a group of committed stakeholders in the hopes that this good work will proliferate.

After attending this conference, participants will gain a better understanding of:

- policies and practices related to substance exposed newborns in select states and communities throughout the country;
- variation in state policies with regard to testing, reporting, classifying, and treating substance exposed newborns;
- critical issues and challenges related to effective policy and practice in the identification and treatment of substance exposed newborns;
- the intent and early implementation of the federal Child Abuse Prevention and Treatment Act (CAPTA) regarding substance exposed newborns, as well as current federal directions in this area; and
- approaches to developing effective policy and practice through multi-disciplinary, collaborative efforts in states and communities.



Who We Are

The National Abandoned Infants Assistance Resource Center's mission is to enhance the quality of social and health services delivered to children who are abandoned or at-risk of abandonment due to the presence of drugs and/or HIV in the family. The Resource Center provides training, information, support, and resources to service providers who assist these children and their families. The Resource Center is located at the University of California at Berkeley, and is a service of the Children's Bureau. Website: aia.berkeley.edu.



Co-Sponsors

The Children's Bureau is the oldest federal agency for children and is located within the U.S. Department of Health and Human Services' Administration for Children and Families, Administration on Children, Youth and Families. It is responsible for assisting States in the delivery of child welfare services—services designed to protect children and strengthen families. The Bureau provides grants to States, Tribes and communities to operate a range of child welfare services including child protective services, family preservation and support, foster care, adoption and independent living. In addition, the Bureau makes major investments in staff training, technology, and innovative programs. Website: www.acf.hhs.gov/programs/cb/

The Substance Abuse and Mental Health Services Administration (SAMHSA), an agency of the U.S. Department of Health and Human Services, was established to focus attention, programs, and funding on improving the lives of people with or at risk for mental and substance abuse disorders. SAMHSA is achieving that vision through a mission that is both action-oriented and measurable: to build resilience and facilitate recovery for people with or at risk for substance abuse and mental illness. In collaboration with the States, national and local community-based and faith-based organizations, and public and private sector providers, SAMHSA is working to ensure that people with or at risk for a mental or addictive disorder have the opportunity for a fulfilling life that includes a job, a home, and meaningful relationships with family and friends. Website: www.samhsa.gov/

Collaborating Partners

- American Hospital Association, Section for Maternal and Child Health
- Kansas City Metropolitan Task Force on Drug Exposed Infants
- National Association of Perinatal Social Workers
- National Center on Substance Abuse and Child Welfare
- National Clearinghouse on Child Abuse and Neglect Information
- National Organization on Fetal Alcohol Syndrome

Additional financial support—Robert Wood Johnson Foundation, Substance Abuse Policy Research Program.

General Information

Registration and Information

The registration and information table will be open:

Wednesday, October 5, 2005: 5:00 pm – 7:00 pm

Thursday, October 6, 2005: 7:30 am – 5:00 pm

Friday, October 7, 2005: 7:30 am – 4:00 pm

Admission to Sessions

Your name badge provides admittance to all conference activities; please wear it at all times during the conference. The colored dot on your badge indicates the Café Conversation group to which you have been randomly assigned on Thursday afternoon, October 6.

Meals

Continental breakfast will be provided to all conference participants on Thursday, October 6 and Friday, October 7 outside the Grand Ballroom on the Lower Lobby Level. Lunch will be provided on Friday, October 7 in the Grand Ballroom. No lunch will be provided on Thursday, October 6. However, the hotel has a restaurant, and a list of additional nearby restaurants is included in your conference packet.

Evaluations

A conference evaluation form is included in your registration packet. We urge you to take a few minutes to complete the form; it will assist us in our future planning. The form can be dropped off in the designated box at the registration area, or submitted to any AIA Resource Center staff person at the end of the conference.

Messages

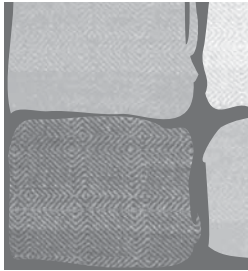
A message board is available in the registration area for communication among and for conference attendees. At the end of the conference, any remaining messages will be discarded.

Special Needs

The Washington Court Hotel is handicap-accessible and strives to meet the special requests of its guests whenever possible. Participants with special needs should contact the hotel management for assistance.



Continuing Education Information



For continuing education purposes, this event is co-sponsored by the National AIA Resource Center and The Institute for Continuing Education. Continuing education credit is offered on a session-by-session basis, with full attendance required for each session attended. If you wish to apply for continuing education credits, please request a continuing education packet at the registration table outside of the Grand Ballroom. There is a processing fee of \$25.00 per person which can be paid by check or cash to the Regents of the University of California when you pick up your application packet.

The continuing education packet will contain full instructions and forms necessary to complete your application. You must also sign in and out at the registration table on both days of the conference. If you have questions regarding continuing education, please call The Institute: 251-990-5030; FAX: 251-990-2665; e-mail: instconted@aol.com.

Psychology: The Institute for Continuing Education is approved by the American Psychological Association to offer continuing education for psychologists. The Institute for Continuing Education maintains responsibility for the program.

Counseling: The Institute for Continuing Education is an organization recognized by the National Board for Certified Counselors (NBCC) to offer continuing education for national certified counselors. The Institute for Continuing Education adheres to NBCC continuing education guidelines. NBCC Provider No. 5643.

Social Work: The Institute for Continuing Education is approved as a provider for social work continuing education by the Association of Social Work Boards (ASWB), through its Approved Continuing Education program (ACE). Social workers should contact their individual state jurisdiction to review current continuing education requirements for licensure

renewal. The Institute for Continuing Education maintains responsibility for the program.

ASWB Provider No. 1007
CA Board of Behavioral Sciences
Provider No. PCE 636
OH Counselor/SW Board: RCS03001
IL Dept. Professional Regulations
Provider No. 159-000606
Florida Provider No. BAP 255

Marriage/Family Therapy: The Institute for Continuing Education is an organization recognized by most state boards of marriage/family therapy to offer continuing education for licensed marriage/family therapists.

Child Development: The Institute for Continuing Education recognizes the CEU criteria and guidelines of the International Association for Continuing Education Training for the award of continuing education credit to early childhood educational professionals.

Drug/Alcohol: The Institute for Continuing Education is approved by the National Association of Alcohol and Drug Abuse Counselors (NAADAC) to provide continuing education for alcohol and drug abuse counselors. NAADAC Provider No. 000243.

Nursing: The Institute for Continuing Education is accredited as a provider of continuing education in nursing by the Alabama Board of Nursing, Provider No. 1124, and the California Board of Registered Nursing, Provider No. CEP 12646. Nurses from states other than Alabama and California should contact their state board to determine if approval of this program through provider status with the Alabama or California Boards of Nursing is acceptable for continuing education credit in their state.

Education: Educators who apply for continuing education credit will be furnished with verification of the contact hours earned by participating in conference sessions; such certification may be submitted by educators, as appropriate, to their school district for professional development credit.

Conference-At-A-Glance

Wednesday, October 5, 2005

5:00 pm–7:00 pm **Early Registration/
Information**

Thursday, October 6, 2005

7:30 am–5:00 pm **Conference
Registration/Information**

7:30 am–8:30 am **Continental Breakfast**

8:30 am–8:40 am **Welcome**

8:40 am–10:15 am **Opening Plenary**
• *Framing the Policy &
Practice Debate on
Substance Exposed
Newborns*

10:15 am–10:30 am **Break**

10:30 am–12:00 pm **Panel**
• *Policies & Practices:
What's Happening
Around the Country*

12:00 pm–1:30 pm **Lunch** (on your own)

1:30 pm–3:15 pm **Café Conversations**

3:15 pm–3:30 pm **Break**

3:30 pm–5:00 pm **Facilitated Discussion
Groups**

5:15 pm–6:00 pm **Film:**
The Listening Heart

Friday, October 7, 2005

7:30 am–4:00 pm **Conference
Registration/Information**

7:30 am–8:30 am **Continental Breakfast**

8:30 am–9:45 am **Panel**
• *Working Collaboratively
on Behalf of Substance
Users & their Newborns*

9:45 am–10:00 am **Break**

10:00 am–11:30 am **Concurrent Workshops**
• Arizona • Missouri
• New Mexico • Rhode Island
• Washington

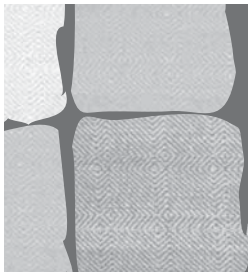
11:30 am–12:50 pm **Luncheon Plenary**
• *Preventing Fetal Alcohol
Spectrum Disorder:
Have We Made Any Progress?*
• *Federal Directions in
Substance Abuse Treatment
& Fetal Alcohol Spectrum
Disorders*

1:00 pm–3:00 pm **Community Work Groups**

3:00 pm–3:15 pm **Break**

3:15 pm–3:55 pm **Closing Keynote**
• *When the Goodenough
Syndrome is Not Good
Enough: Future Directions in
the Prevention & Treatment
of Substance Exposed
Newborns*

3:55 pm–4:00 pm **Conference Closing**



Conference Agenda

Wednesday, October 5, 2005

5:00 pm–7:00 pm **Early Registration/Information**
LOWER LOBBY, BASE OF STAIRS

Thursday, October 6, 2005

7:30 am–5:00 pm **Conference Registration/Information**
BALLROOM FOYER

7:30 am–8:30 am **Continental Breakfast**
BALLROOM FOYER

8:30 am–8:40 am **Welcome**
GRAND BALLROOM
Jeanne Pietrzak, National Abandoned Infants Assistance
Resource Center

8:40 am–10:15 am **Opening Plenary:**
• *Framing the Policy & Practice Debate on Substance
Exposed Newborns*
GRAND BALLROOM

Presenters: **Barry Lester**, Brown Medical School
The Honorable James C. Greenwood, Biotechnology
Industry Organization; former Congressman

10:15 am–10:30 am **Break**
BALLROOM FOYER

10:30 am–12:00 pm **Panel:**
• *Policies & Practices: What's Happening Around the Country*
GRAND BALLROOM

Moderator: **Steve Christian**, National Conference of
State Legislatures

Presenters: **Nancy Young**, Children and Family Futures
Amy Price and **Krista Drescher-Burke**, National
Abandoned Infants Assistance Resource Center

Dr. Young will present summary findings from a National Center on Substance Abuse and Child Welfare report on state policies and practices regarding substance exposed infants. Dr. Young will discuss issues raised in responding to infants who have been prenatally exposed to alcohol or drugs, especially the challenges of working across multiple systems, including substance abuse treatment, child welfare, dependency courts, maternal and child health, OB/GYNs, practitioners, hospitals, disability agencies, and child development. Dr. Young will also describe promising models of state policy.

Ms. Price and Ms. Drescher-Burke will present findings from a National Abandoned Infants Assistance Resource Center study to review policies and practices related to the identification and reporting of substance exposed newborns (SEN) at the time of birth, and child welfare's initial response to reports of SEN. Implications for future policy and practice directions will be discussed.

12:00 pm–1:30 pm **Lunch** (on your own)

1:30 pm–3:15 pm **Café Conversations**
ASHLAWN (Blue)
EXECUTIVE (Red)
HERMITAGE (Green)
MADISON (Orange)
SAGAMORE (Yellow)

Engage in brief discussions with small interdisciplinary groups of colleagues from throughout the country on such topics as identifying substance using pregnant women and substance exposed newborns, child welfare reporting, child welfare response, and interagency collaboration. Participants have been randomly assigned to groups indicated by the colored dot on their name badge.

3:15 pm–3:30 pm **Break**
BALLROOM FOYER

3:30 pm–5:00 pm **Facilitated Discussion Groups**
Child Welfare
ASHLAWN
Child Welfare
MADISON
Community-Based Organizations
EXECUTIVE
Public Health/Drug Treatment
HERMITAGE
Hospitals
SAGAMORE



Meet with colleagues from across the country to share information about challenges, successes and current issues related to substance exposed newborns. Participants will assign themselves to rooms based upon discipline, agency affiliation, and/or personal interest.

5:15 pm–6:00 pm **Film: *The Listening Heart***
GRAND BALLROOM

Dr. Ira Chasnoff, from the Children's Research Triangle, will introduce and show an educational documentary that chronicles the day-to-day challenges of children and families who struggle with the consequences of Fetal Alcohol Syndrome.

Friday, October 7, 2005

7:30 am–4:00 pm **Conference Registration/Information**
BALLROOM FOYER

7:30 am–8:30 am **Continental Breakfast**
BALLROOM FOYER

8:30 am–9:45 am **Panel:**
Working Collaboratively on Behalf of Substance Users & their Newborns
GRAND BALLROOM

Moderator: **Sid Gardner**, Children and Family Futures

Presenters: **Sue Green**, Washington State Department of Social and Health Services-Division of Alcohol and Substance Abuse

Andy Hsi, University of New Mexico
Health Sciences Center

Linda Johnson, Arizona Department of Economic Security, Division of Children, Youth, and Families

Alice Kitchen, Children's Mercy Hospitals and Clinics

Barry Lester, Brown Medical School

Representatives from Arizona, Rhode Island, Washington State, and the metro areas of Albuquerque, New Mexico, and Kansas City, Missouri, will briefly describe their collaborative efforts to identify and address the needs of substance users and their neonates.

9:45 am–10:00 am **Break**
BALLROOM FOYER

10:00 am–11:30 am

Concurrent Workshops

Multidisciplinary teams will give detailed presentations of each of the models discussed in the morning panel.

Arizona

MADISON ROOM

Presenters: **Nancy Hansen**, Arizona Department of Economic Security, Division of Children, Youth and Families
Linda Johnson, Arizona Department of Economic Security, Division of Children, Youth and Families
Susan Stephens-Groff, Comprehensive Medical and Dental Program

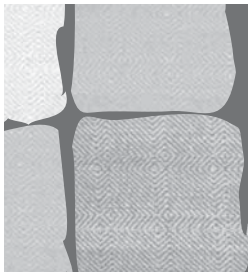
Under the direction of Governor Janet Napolitano, Arizona physicians with expertise in prenatal substance abuse, Child Protective Services, Arizona Department of Health Services, Indian Health Services, and hospital social services have come together to develop a consistent approach to identifying substance exposed newborns (SEN). This workshop will provide an overview of the process by which Arizona developed a medical guideline for identifying substance exposed newborns, and the strategies used to achieve stakeholder buy-in for the guidelines. Panelists will focus on the content, purpose, and specifics of Arizona's SEN guidelines, and will give information on available resource models for maternal and SEN treatment.

Missouri

HERMITAGE ROOM

Presenters: **Penny Clodfelter**, Family and Juvenile Drug Court
Alice Kitchen, Children's Mercy Hospitals and Clinics
Fred Simmens, Missouri Children's Division
Oneta Templeton-McMann, TIES Program, Children's Mercy Hospital

This session will cover challenges presented by infants exposed to alcohol or other drugs in utero (born drug exposed) through the eyes of leaders in child welfare, family/juvenile court, and drug treatment. The presentation will include the evolution of the local metropolitan task force, creation of a position paper, development of shared tools (Newborn Crisis Assessment form), legislative advocacy, expansion of drug treatment, Court monitoring, and problem-solving concerning inadequate housing and transportation. The panel will end with a fast-forward to the lessons learned over 16 years, and provide tips for those starting down this road.





New Mexico

ASHLAWN ROOM

Presenters: **Andrew Hsi**, Department of Pediatrics, University of New Mexico Health Sciences Center
Patrick Lyford, Care Management Department, University Hospital, University of New Mexico Health Sciences Center
Bart Sandoval, Child Protective Services, New Mexico Children Youth and Families Department

This workshop will present data regarding the epidemiology of prenatal alcohol and drug use among women in New Mexico and the process of developing clinical medical guidelines for identifying infants with prenatal alcohol and drug exposure. The presenters will share lessons learned and the struggle to create a best practice applicable across the greater Albuquerque metropolitan area. Finally, the workshop will examine the implications of identifying infants with prenatal alcohol and drug exposure on prevention of adverse childhood events.

Rhode Island

EXECUTIVE ROOM

Presenters: **Barry Lester**, Brown Medical School
Linda Lynch, Family Treatment Drug Court
Rosemary Soave, Vulnerable Infants Program of Rhode Island, Infant Development Center, Women and Infants Hospital

This workshop will describe how the Vulnerable Infants Program and Family Treatment Drug Court were established and details of how these programs work. This includes standardized assessments, decisions about initial placement, interface with child protective services and community agencies, compliance with the Adoption and Safe Families Act, client involvement with substance use and mental health treatment programs, court rewards and sanctions, and reunification. Presenters will also discuss lessons learned, problems encountered, and directions for the future.

Washington

SAGAMORE ROOM

Presenters: **Sue Green**, Washington State Department of Social and Health Services-Division of Alcohol and Substance Abuse
Polly Taylor, Washington State Department of Health, Office of Maternal and Child Health

Representatives from Washington State's Department of Health and Department of Social and Health Services will share best practices and describe innovative comprehensive programs for substance using pregnant and parenting women. Program goals include: establishing universal screening; improving provider screening skill and effectiveness; increasing the number of women in treatment; providing consistent guidance to health care professionals related to testing and reporting drug exposed newborns; intervening to improve birth outcomes and prevent unintended pregnancy, and/or drug or alcohol exposed infants; and providing priority access to chemical dependency treatment services. In addition, the presenters will discuss how these programs have succeeded in assisting chemically dependent women in navigating through multiple systems and achieving and maintaining sobriety by providing them with support and interventions such as behavioral health, parenting classes, and child development screening and activities.

11:30 am–12:50 pm

Luncheon Plenary

GRAND BALLROOM

Moderator: **Sharon Amatetti**, Substance Abuse and Mental Health Services Administration, Center for Substance Abuse Treatment

Presenters: **Kathleen Mitchell**, National Organization on Fetal Alcohol Syndrome
Andrew McKechnie, Legislative Aide to Congressman Jim Ramstad, MN

*Preventing Fetal Alcohol Spectrum Disorder:
Have We Made Any Progress?*

Ms. Mitchell will give an overview of the national and international progress made on fetal alcohol spectrum disorder (FASD). Her talk will interweave a discussion of the issue, progress on FASD legislation and social policy, and a personal reflection on raising a daughter with fetal alcohol syndrome.

*Federal Directions in Substance Abuse Treatment &
Fetal Alcohol Spectrum Disorders*

Mr. McKechnie will give an update on the work of two congressional caucuses spearheaded by Congressman Ramstad: the Fetal Alcohol Spectrum Disorders Caucus and the Alcohol Treatment and Recovery Caucus. He will provide an overview of the legislative agendas for both caucuses, and an assessment of what lies ahead.





1:00 pm–3:00 pm

Community Work Groups

Arizona

MADISON ROOM

Missouri

HERMITAGE ROOM

New Mexico

ASHLAWN ROOM

Rhode Island

EXECUTIVE ROOM

Washington

SAGAMORE ROOM

Using information and ideas gathered throughout the conference, interdisciplinary groups from states or communities will have an opportunity to work together to identify challenges and plan strategically. Presenters from the morning panel and workshops will be available to guide and inform participants as they begin to work through plans for their own states or communities. Teams are welcome to attend the session that corresponds to the model they use or wish to pursue. Participants who did not come with a team are encouraged to use the participant list to connect with others from their state or region.

3:00 pm–3:15 pm

Break

BALLROOM FOYER

3:15 pm–3:55 pm

Closing Keynote:

When the Goodenough Syndrome is not Good Enough: Future Directions in the Prevention & Treatment of Substance Exposed Newborns

GRAND BALLROOM

Presenter: **Ira Chasnoff**, Children's Research Triangle

The impact of prenatal substance exposure on pregnancy and the neonate has been described in a variety of studies, and the long term implications of this exposure for the child are now beginning to be understood. Woven throughout this research is the realization that multiple factors mediate the impact of drugs on the exposed child's neurologic and behavioral development. This session will focus on new developments in the identification and treatment of children whose growth and development have been affected by prenatal exposure to alcohol and illicit drugs, and offer suggestions for policies and practices to improve outcomes.

3:55 pm–4:00 pm

Conference Closing

GRAND BALLROOM

Jeanne Pietrzak, National AIA Resource Center

Keynote Speakers

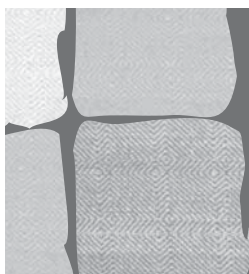
Ira Chasnoff, MD

*Children's Research Triangle
Chicago, IL*



Dr. Ira Chasnoff is President of the Children's Research Triangle (CRT) and a professor of clinical pediatrics at the University of Illinois College of Medicine in Chicago. He is one of the nation's leading researchers in the field of maternal drug use during pregnancy and the effects on the newborn infant and child. His research projects include a study of the long-term cognitive, behavioral, and educational developmental effects of prenatal exposure to alcohol, cocaine, and other drugs; the effects on birth outcome of prenatal treatment and counseling for pregnant drug abusers; and the effectiveness of both outpatient and residential treatment programs for pregnant drug abusers. Dr. Chasnoff and the team at CRT opened and operated a laboratory preschool classroom to develop specific interventions for children prenatally exposed to alcohol and other drugs and developed a model Head Start Family Service Center for children and their families at risk from drugs and the drug-seeking environment. In addition, Dr. Chasnoff and the CRT research team were one of five national sites conducting research into the integration of behavioral health interventions into primary health care services for high-risk children and their families, and through this project they studied the impact of concurrent planning on permanency placement for children in the foster care system. In 2002, the CRT, under Dr. Chasnoff's leadership, was selected by the Centers for Disease Control as one of five national centers for research into innovative treatment for children with Fetal Alcohol Syndrome. Dr. Chasnoff's current work focuses on community approaches to the integration of behavioral health services into primary health care for women and children.

Dr. Chasnoff is a fellow of the American Academy of Pediatrics and a member of the Society for Pediatric Research and the Society for Research in Child Development. He is the author of five books and numerous articles on the effects of drug use on pregnancy and on the long-term cognitive, behavioral, and learning outcomes of prenatally exposed children. Dr. Chasnoff's first book, *Drug Use in Pregnancy: Mother and Child*, was published in 1986. His second book, *Drugs, Alcohol, Pregnancy, and Parenting*, received the Book of the Year Award from the American Journal of Nursing. His fourth book, *Understanding the Drug-Exposed Child: Approaches to Behavior and Learning*, has been cited as an important addition to the literature on helping children at risk of educational failure. Dr. Chasnoff's most recent book, *The Nature of Nurture: Biology, Environment, and the Drug-Exposed Child*, explores the biological and environmental factors that impact the ultimate development of alcohol- and drug-exposed children and presents practical strategies for helping children reach their full potential at home and in the classroom. Dr. Chasnoff for several years has been selected by a poll of physicians across the nation for listing in America's Best Doctors, and has been cited for his ability to translate complex medical and psychosocial issues into relevant policy that guides the delivery of quality services. Dr. Chasnoff has been active in establishing comprehensive family intervention programs for children across the United States, as well as in Australia, Denmark, Portugal, and the former Soviet Union.



Barry M. Lester, PhD

*Brown University Center for the Study of Children at Risk, Brown Medical School
Providence, RI*



Dr. Barry Lester is Professor of Psychiatry & Human Behavior and Pediatrics at Brown Medical School. He is the Founder and Director of the Brown University Center for the Study of Children at Risk, and The Infant Development Center at Women & Infants Hospital. The Brown University Center provides research and clinical services for infants at risk and their families, as well as research and clinical training. Dr. Lester received his PhD in developmental psychology in 1973 and later completed a postdoctoral fellowship in pediatrics. His specialty is developmental processes in infants at risk, including infants with prenatal substance exposure. He is particularly interested in the interplay between the biological, parenting, and social environmental forces that drive development. His research has been supported by National Institutes of Health (NIH) grants for over 30 years. A past member of NIH study sections, Dr. Lester is currently a member of the National Advisory Council on Drug Abuse. He is past president of the International Association for Infant Mental Health. He is the author of more than 200 scientific publications and 16 books.

Presenters and Moderators

Sharon Amatetti, MPH

*Substance Abuse and Mental Health Services Administration
Center for Substance Abuse Treatment
Rockville, MD*

Sharon Amatetti is a senior policy analyst for the Substance Abuse and Mental Health Services Administration (SAMHSA), Center for Substance Abuse Treatment (CSAT) and Coordinator of the Center's Women and Families Coordinating Committee. She is responsible for ensuring that women, youth, and family issues are coordinated with the other SAMHSA Centers and Federal agencies, and that adequate attention to women, youth, and families is incorporated throughout all CSAT programs. Ms. Amatetti manages the Center's activities pertaining to child welfare and the impact of parental alcohol and drug abuse on children. Her work in this area includes management of an inter-agency agreement with the Administration for Children, Youth and Families to advance cross-system coordination, which in part involved the development and management of the National Center on Substance Abuse and Child Welfare. She holds a master's degree in public health, and a certificate in health care management.

Steve Christian, JD, MSW

*National Conference of State Legislatures
Denver, CO*

Steve Christian is a program director with the National Conference of State Legislatures (NCSL) in Denver, Colorado. He manages the Child Welfare Program, which provides assistance to state legislators and staff on issues such as child abuse and neglect, adoption, and foster care. He is the author of numerous publications, including *New Directions for Child Protective Services: Supporting Children, Families and Communities Through Legislative Reform*; *A Place to Call Home: Adoption and Guardianship for Children in Foster Care*; and *Linking Child Welfare and Substance Abuse Treatment: A Guide for Legislators*. He is also the Project Manager for the Technical Assistance to State Legislators on the Child and Family Services Reviews project funded by the Children's Bureau. Prior to joining NCSL, he practiced law and served as a volunteer guardian ad litem for abused children in dependency and neglect proceedings in both Colorado and Florida.

Penny Clodfelter, LCSW, LMSW

*Jackson County Family and Juvenile Drug Court
Kansas City, MO*

Penny Clodfelter has been the Program Manager of the Jackson County Family and Juvenile Drug Court since 1999. She has been employed by the Family Court since 1993 and formerly coordinated the Linkage Project for the Court. Ms. Clodfelter works part-time as a clinical social worker in the Emergency Department of Children's Mercy Hospital, Kansas City. She is also a faculty member at the National Drug Court Institute, and a consultant for the Department of Justice, Bureau of Special Assistance. She has been a presenter at national, state and local conferences on the topics of substance abuse, domestic violence, child welfare issues, suicide prevention, and drug court implementation. She has a master's degree in social work, and a bachelor's degree in political science/legal studies.





Krista Drescher-Burke, MSW

*National Abandoned Infants Assistance Resource Center
Berkeley, CA*

Krista Drescher-Burke is a third-year doctoral student at the University of California at Berkeley School of Social Welfare. She has worked with the National Abandoned Infants Assistance Resource Center, where she recently completed a study funded by the Robert Wood Johnson Foundation examining policies and practices related to testing, reporting, and treatment of substance exposed newborns, since January of 2004. Currently, she is a teaching assistant at UC Berkeley, and she teaches a research class at California State University, San Jose. She has also worked as a research assistant at the University of Kentucky Center on Drug and Alcohol Research. Her research interests include drug policy and contraception with substance-using women. She has clinical experience with recovering substance users and with youth, and she currently volunteers as a bereavement counselor at Pathways Hospice in Oakland.

Sid Gardner, MPA

*Children and Family Futures
Irvine, CA*

Sid Gardner serves as President of Children and Family Futures, a nonprofit firm based in Irvine in which he works with his wife, Dr. Nancy Young, and their staff of thirteen. From 1991 to 2001, Mr. Gardner was Director of the Center for Collaboration for Children at California State University, Fullerton. Prior to that, he served as a program officer of the Annie E. Casey Foundation in Connecticut, as a Hartford City Council Member, on the staff of the White House Domestic Council, as Director of State and Local Affairs for the Children's Defense Fund, as Deputy Assistant Secretary of the U.S. Department of Health, Education and Welfare, and as a consultant to the National Governors' Association, the U.S. Conference of Mayors, and the National League of Cities. He has taught on the adjunct faculty of seven universities in California, Washington, DC, and Connecticut. He is the author of *Beyond Collaboration to Results*. His most recent book, *Cities, Counties, Kids, and Families*, addresses the role of local governments in strategic planning for children and family policy.

Susan R. Green, MPA

*Washington State Department of Social and Health Services-
Division of Alcohol and Substance Abuse
Olympia, WA*

Susan Green has been working in the chemical dependency field since 1986. She began as an intensive outpatient counselor working with adults. A year later, she began her adolescent career at Ryther Child Center, followed by outpatient work with adolescents. Ms. Green worked on the adolescent unit at Providence St. Peter Chemical Dependency Center for eight years in counseling, admissions, and management. In September 1998, she joined the Division of Alcohol and Substance Abuse as the At-Risk/Runaway Youth Coordinator and currently holds the position of Women/Special Services Lead. Ms. Green holds a BA in sociology, with a certificate in social work, and a certificate in alcohol studies and psychology. She received a master's degree in public administration in 1998.

The Honorable James C. Greenwood

*Biotechnology Industry Organization
Washington, DC*

James Greenwood is President of the Biotechnology Industry Organization (BIO) in Washington, DC, which represents more than 1,000 biotechnology companies, academic institutions, state biotechnology centers and related organizations in all 50 U.S. states and 33 other nations. BIO members are involved in the research and development of health care, agricultural, industrial and environmental biotechnology products. Mr. Greenwood represented Pennsylvania's Eighth District in the U.S. House of Representatives from 1993 through 2004. As a leader on health care issues, he authored numerous bills signed into law including legislation to promote pediatric labeling for pharmaceuticals, reform medical device review and

approval, and expand research and establish innovative programs to address traumatic brain injury. His legislation to reform medical liability insurance passed the House several times but stalled in the Senate. From 2001 to 2004, Mr. Greenwood served as Chairman of the Energy and Commerce Committee Subcommittee on Oversight and Investigation with oversight authority over all issues in the full Committee's vast jurisdiction. He held hearings on topics ranging from bioterrorism to corporate governance to the safety of nuclear power plants. Prior to his election to Congress, Mr. Greenwood served six years in the Pennsylvania General Assembly (1980-1986) and six years in the Pennsylvania Senate (1986-1993). He specialized in health, the environment, and children's issues. Mr. Greenwood received a BA in social work in 1973. From 1977 until 1980, he worked as a social worker with abused and neglected children at the Bucks County Children and Youth Social Service Agency.

Nancy Hansen, MSW

*Arizona Department of Economic Security
Division for Children, Youth, and Families
Phoenix, AZ*

Nancy Hansen is a Human Services Program Development Specialist for the Arizona Department of Economic Security, Division for Children, Youth, and Families. She has over twenty years experience in the field of child welfare, working at the front lines, and in management and administration. In her current position, she has been responsible for the creation, implementation, and administration of the Arizona Families F.I.R.S.T. program in addition to initiating and participating in innovative strategies to improve outcomes for children and families involved in the Arizona child welfare system. Ms. Hansen is currently enrolled in a master's program in social work.

Andrew Hsi, MD, MPH

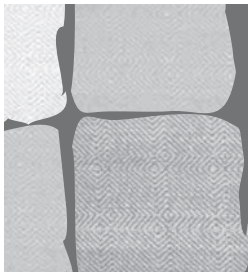
*Department of Pediatrics, University of New Mexico Health Sciences Center
Albuquerque, NM*

Dr. Andrew Hsi joined the clinical staff in pediatrics at the University of New Mexico in 1987, serving as Director of the Newborn Nursery. He became director of the Division of General Pediatrics in 1998 and was promoted to professor in 2003. Dr. Hsi has focused on developing systems of care for children and families affected by prenatal alcohol and drug exposure, family violence, parental mental illness, and unsupported teen parenting. In 1999, he received the first national Humanism in Medicine Award from the American Association of Medical Colleges and Pfizer Pharmaceuticals. As an advocate for children in Albuquerque, he was awarded the Children's Champion Award in 2001 from All Faith's Receiving Home. As part of an interdisciplinary effort, he assists research into the effects of adverse childhood and adult events with a focus on aiding primary care providers in organizing treatment protocols for adults with histories of adverse events. His long-term goal is to create evidence-based approaches to prevent additional adverse events in the lives of children and youth.

Linda Johnson, MSW, LCSW

*Arizona Department of Economic Security
Division of Children, Youth, and Families
Phoenix, AZ*

Linda Johnson is the Manager for State Policy and Program Development for the Division of Children, Youth and Families, Arizona Department of Economic Security. The Arizona Department of Economic Security is the umbrella organization for child welfare programs including child protective services (CPS), foster care, adoption, adoption subsidy, independent living services, permanency planning, and the Child and Family Services Review. She recently led one of several CPS reform initiatives to identify and provide intervention for substance exposed newborns. During her twenty-six year career in child welfare, Ms. Johnson has served as a CPS worker, CPS supervisor, and CPS assistant program manager. She is a licensed clinical social worker.





Alice Kitchen, LCSW, MPA

*Children's Mercy Hospitals and Clinics
Kansas City, MO*

Alice Kitchen is the Director of Children's Mercy Hospitals and Clinics Department of Social Work and Community Services providing inpatient, outpatient and community based in-home services. She is Principal Investigator for federal, state, and county funded TIES, Healthy Start and Family Friends Programs, and Co-Chair of the Metropolitan Task Force on Drug Exposed Infants. Ms. Kitchen is a member of the Missouri Prenatal Substance Abuse Advisory Council, and a founding member of the Child Protection Center. She also serves as an instructor for the University of Kansas, School of Social Welfare. She is past president of the national Society of Social Work Leadership in Health Care (SSWLHC), and the 1999 Coordinator of SSWLHC Best Practice Monograph Series. Ms. Kitchen is the author of articles on community problem solving, affecting public policy and undocumented patients.

Patrick F. Lyford, MEd

*University of New Mexico Hospital
Albuquerque, NM*

Patrick Lyford has worked as a hospital patient care manager and patient advocate for over 30 years, in such areas as substance abuse, mental health, burn, and trauma. He has been the Director of the Care Management Services Department at University of New Mexico Hospital for the past five years. Mr. Lyford has extensive experience working with the issues surrounding substance exposed newborns and their mothers, and in collaborating with the New Mexico Children, Youth and Family Department in resolving issues that arise from these situations. He received his master's degree in counseling/rehabilitation psychology.

Linda Lynch, BS

*Rhode Island Family Court
Providence, RI*

Linda Lynch is Executive Director at the Rhode Island Family Court in Providence, Rhode Island. She has worked directly for Chief Judge Jeremiah for four years where her primary focus was on writing necessary documents, letters and grants, pertaining to developing and implementing specialty courts. For the past three years, she has also acted as the Project Director for Rhode Island's Family Treatment Drug Court (FTDC) responsible for managing, overseeing and complying with the federal grant requirements related to substance abuse treatment and other services for parents of drug-exposed infants under jurisdiction of the Family Court. Before joining the Rhode Island Family Court, Ms. Lynch was an administrator at the State's Division of Substance Abuse where she was responsible for the formulation and implementation of all treatment and prevention policy, planning, and program development activities consistent with executive, legislative and regulatory requirements. She is a member and past secretary/treasurer of the New England Association of Drug Court Professionals.

Andrew McKechnie

*Office of Rep. Jim Ramstad (MN-03)
Washington, DC*

Andrew McKechnie is a legislative aide to Rep. Jim Ramstad, co-chair and founder of the bipartisan Fetal Alcohol Spectrum Disorders Caucus and the Addiction, Treatment and Recovery Caucus. He serves as Rep. Ramstad's legislative aide on both substance abuse and fetal alcohol spectrum disorder issues. Prior to joining Rep. Ramstad's office, Mr. McKechnie worked as a public policy advisor for Hazelden Foundation, a Minnesota-based chemical dependency treatment provider.

Kathleen Mitchell, MHS, LCADC

*National Organization on Fetal Alcohol Syndrome
Washington, DC*

Kathleen Mitchell is Vice President and National Spokesperson of the National Organization on Fetal Alcohol Syndrome (NOFAS). Ms. Mitchell is a licensed clinical alcohol and drug counselor with nearly 20 years of experience as an educator, clinician, and lecturer in the addictions field. In addition to being a noted international speaker on Fetal Alcohol Spectrum Disorder (FASD), she was appointed to the National Task Force on Fetal Alcohol Syndrome and Fetal Alcohol Effect by the Secretary of the Department of Health and Human Services. She has provided testimony to the U.S. House of Representatives and collaborated with the producers of NBC's "Law and Order" to feature a show on Fetal Alcohol Syndrome (FAS). Ms. Mitchell also has shared her personal story of raising a daughter with FAS for use in documentaries, educational videos, and media such as Glamour Magazine, NBC's "Real Life" and the "Later Today Show." She also has authored the NOFAS handbook, *Fetal Alcohol Syndrome: A Guidebook for Parents and Caregivers*. Ms. Mitchell conducts workshops and provides lectures on the addictive disease process, prevention of FASD, screening and assessment of women at risk, addressing secondary disabilities and many other FASD-related topics.

Jeanne Pietrzak, MSW

*National Abandoned Infants Assistance Resource Center
Berkeley, CA*

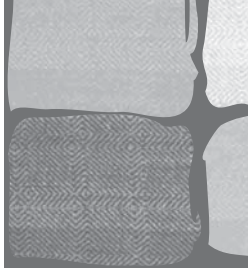
Jeanne Pietrzak has been the Director of the National Abandoned Infants Assistance Resource Center since its inception in 1990. In her tenure with the University of California at Berkeley, Family Welfare Research Group, she has directed numerous state, federal, and private research projects, program evaluations, and service projects focused on drug and HIV affected children and families. Ms. Pietrzak has co-authored a book on Practical Program Evaluation (Sage) and co-edited another on Families Living with Drugs and HIV (Guilford). She has taught child welfare classes to undergraduate students at Cal State, Hayward. Ms. Pietrzak has also held positions as a community planner, foundation coordinator, and case manager working with families of children who were severely mentally and multiply impaired, and working with adults who were mildly developmentally disabled.

Amy Price, MPA

*National Abandoned Infants Assistance Resource Center
Berkeley, CA*

Amy Price is Associate Director of the National Abandoned Infants Assistance Resource Center at the University of California at Berkeley, where she has worked on substance abuse and child welfare issues for the past 12 years. Ms. Price just completed a national Robert Wood Johnson funded study of policies and practices related to substance exposed newborns. Additionally, she edits the Center's journal, *The Source*, which focuses on issues related to perinatal substance abuse, child welfare, and families affected by HIV. She has convened and chaired national policy groups on various related topics, and she has received national recognition for her work developing and evaluating shared family care programs, which place whole families together in the homes of mentors in the community as an alternative to traditional foster care. Ms. Price has also served as a consultant to Contra Costa County's Children and Family Services in California, assisting them to develop collaborative relationships with substance abuse services in the county; and she served as an advisory consultant to the California Department of Social Services' Child Welfare Services Stakeholders Workgroup on Permanency and Child Well-Being. Prior to joining the Resource Center, Ms. Price served a two-year term as a policy fellow with the Maryland Governor's Office for Children, Youth and Families, where she was involved with policy analysis and program development, including a project to provide early intervention services to drug-exposed infants.





Bart Sandoval, LBSW

CYFD Protective Services

Bernalillo County East Area Investigations and In Home Services Operation

Albuquerque, NM

Bart Sandoval is the County Office Manager for the Bernalillo County East Area Investigations and In Home Services Operation for the State of New Mexico Children, Youth and Families Department (CYFD). The Bernalillo County CPS Operations are the leaders in the State of New Mexico in implementing Team Decision Making, Structured Decision Making, Sexual Abuse MDT via the Albuquerque Children's Safe House, Healthy Beginnings Clinic, and The Child Abuse Response Team at the University of New Mexico Health Sciences Center. The operation works collaboratively with dozens of entities to improve the safety, permanence and well-being of the children that come to the attention of the Department. Mr. Sandoval has worked effectively to establish a collaborative working relationship with the University of New Mexico Health Sciences Center's Los Pasos Program, the state's premier program serving substance exposed infants and their families. He has worked with the Department of Health's Family Infant Toddler Program as a member of the Environmental Risk Steering Committee for the past two years to establish a referral process and feedback loop from early intervention providers to the CYFD. This program was designed to address the needs of substance exposed infants and to identify children under three that are subject of a substantiated child abuse and neglect investigation. Mr. Sandoval holds a BA degree in psychology, with a minor in counseling and educational psychology. He is a licensed baccalaureate social worker.

Frederic M. Simmens, MPA

Children's Division, Missouri Department of Social Services

Jefferson City, MO

Fred Simmens is the Director of the Children's Division for the State of Missouri Department of Social Services. He is responsible for child welfare and early childhood services provided to families and children. He began his career with the Division of Family Services as a Social Service Worker in Jackson County, working with foster children and their families. He also recruited and licensed foster families and supervised an alternative care unit. In 1982, he became County Director in Saline County. From 1984 to 1998, he held a variety of positions in the DFS Central Office including Assistant Deputy Director, where he was actively involved in the development of several programs including Behavioral and Medical Foster Care, Family-Centered Service and the Multiple Response System for investigations of child abuse and neglect reports. In 1998, he became the Chief Operations Officer for the Missouri Patient Care Review Foundation, a health care quality improvement organization. He returned to the Division of Family Services in 2002 as the Children's Services Director for Jackson County.

Rosemary Soave, MSW, LCSW

Vulnerable Infants Program

Rhode Island Women & Infants Hospital

Providence, RI

Rosemary Soave is the Director of the Vulnerable Infants Program of Rhode Island Women & Infants Hospital in Providence, Rhode Island. She has worked for over 15 years with at risk children and families both as a direct service provider and as an administrator. She has extensive knowledge in child welfare and with families affected by substance abuse. She worked as a clinician in a family strengthening and preservation program in Providence, and then became Manager of the Family Support Program. Before joining the Infant Development Center at Women & Infants Hospital, Ms. Soave was the Director of Early Head Start in Central Falls Rhode Island. She is also a member of the Steering Committee for the RI Family Treatment Drug Court (FTDC), is on the board of directors for the New England Region Drug Court Association, and is the supervisor the Rhode Island FTDC Team of Care Coordinators.

Susan Stephens-Groff, MD

*Comprehensive Medical & Dental Program
Phoenix, AZ*

Dr. Susan Stephens-Groff is the Medical Director for the Comprehensive Medical & Dental Program (CMDP), which is the health plan that administers care to Arizona's children in the child welfare system. Dr. Stephens-Groff's areas of interest and expertise include substance abuse as it affects the pregnant woman, fetus, and newborn, as well as the topic of pediatric homelessness. She is founder and remains Medical Director of the Pappas Medical Clinic, which has provided school-based healthcare to homeless children since May 1993.

Polly Taylor, CNM, MPH, ARNP

*Washington State Department of Health
Office of Maternal and Child Health
Olympia, WA*

Polly Taylor has served as a public health nurse consultant with the Washington State Department of Health Maternal Infant Health section since 1991. She has been the State Women's Health Coordinator since 1996. Her current responsibilities include consultation and technical assistance to state and local agencies; programmatic aspects of contracts, monitoring and quality assurance; assessment; and development of policies and best practice materials related to the delivery of health services for pregnant women and their families. Other duties include planning and program development and legislative bill review/analysis. Specific areas of focus: drug/alcohol use in pregnancy, family planning collaboration, and HIV/AIDS infection in women and children, maternal health issues, women's health, and unintended pregnancy prevention. Prior to this position, she was employed by the New Hampshire Division of Public Health in a similar position. Ms. Taylor has worked as a nurse midwife in several locations with diverse populations. She continues to provide women's health care as a volunteer nurse-practitioner at the Evergreen State College Student Health Center. Ms. Taylor has frequently presented at conferences and has several published works.

Oneta Templeton McMann, LCSW, ACSW

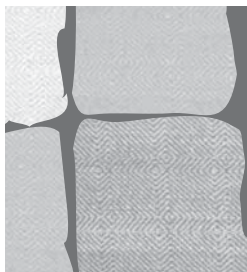
*Team for Infants Endangered by Substance Abuse
Children's Mercy Hospital
Kansas City, MO*

Oneta Templeton McMann is Program Coordinator for the TIES (Team for Infants Endangered by Substance Abuse) Program of Children's Mercy Hospital in Kansas City, Missouri. She has over 25 years of experience in medical and community social work, and over 20 years as a social work manager. She has been Program Coordinator since the inception of the TIES Program and also oversees a Healthy Start subcontract to provide home-based, health promotion services. Ms. McMann is a founding member of the Jackson County multi-disciplinary team for Perinatal Services; a member of the Maternal and Child Health Coalition of Greater Kansas City; and Board Secretary of Amethyst Place, a newly established supportive housing program for recovering women and their families.

Nancy K. Young, PhD

*Children and Family Futures
Irvine, CA*

Dr. Nancy Young is Director of Children and Family Futures (CFF), a California-based policy institute that works to improve outcomes for children and families, particularly those in the welfare and child welfare systems who are affected by alcohol and other drugs. She currently serves as Director of the National Center on Substance Abuse and Child Welfare (NCSACW), funded by the Substance Abuse and Mental Health Services Administration (SAMHSA), Center for Substance Abuse Treatment (CSAT) and the Administration on Children, Youth and Families (ACYF), Office of Child Abuse and Neglect (OCAN). In addition, she directs a separate CSAT-funded contract to provide technical assistance focused on improving services for women, children and families. Dr. Young has worked as a consultant to more than 40 states and communities on prevention, treatment, and systems-collaboration issues.



National Exhibitors



Children's Research Triangle

180 N. Michigan Ave., Suite 700
Chicago, IL 60601
Phone: 312-726-4011; Fax: 312-726-4021
Website: www.childstudy.org

National Abandoned Infants Assistance Resource Center

University of California, Berkeley
1950 Addison, Suite 104, #7402
Berkeley, CA 94720-7402
Phone: 510-643-8390; Fax: 510-643-7019
E-mail: aia@berkeley.edu
Website: aia.berkeley.edu

National Association of Perinatal Social Workers

Irene Bruskin, Membership Chair
Children's Hospital of New York Presbyterian
3959 Broadway – CHS T757
New York, NY 10032
Phone: 212-342-8594
Website: www.napsw.org

National Clearinghouse on Child Abuse and Neglect Information

330 C Street, SW
Washington, DC 20447
Phone: 800-394-3366 or 703-385-7565; Fax: 703-385-3206
E-mail: nccanch@caliber.com
Website: nccanch.acf.hhs.gov/

National Organization on Fetal Alcohol Syndrome (NOFAS)

900 17th Street, NW, Suite 910
Washington, DC 20006
Phone: 202-785-4585; Fax: 202-466-6456
E-mail: info@nofas.org
Website: www.nofas.org

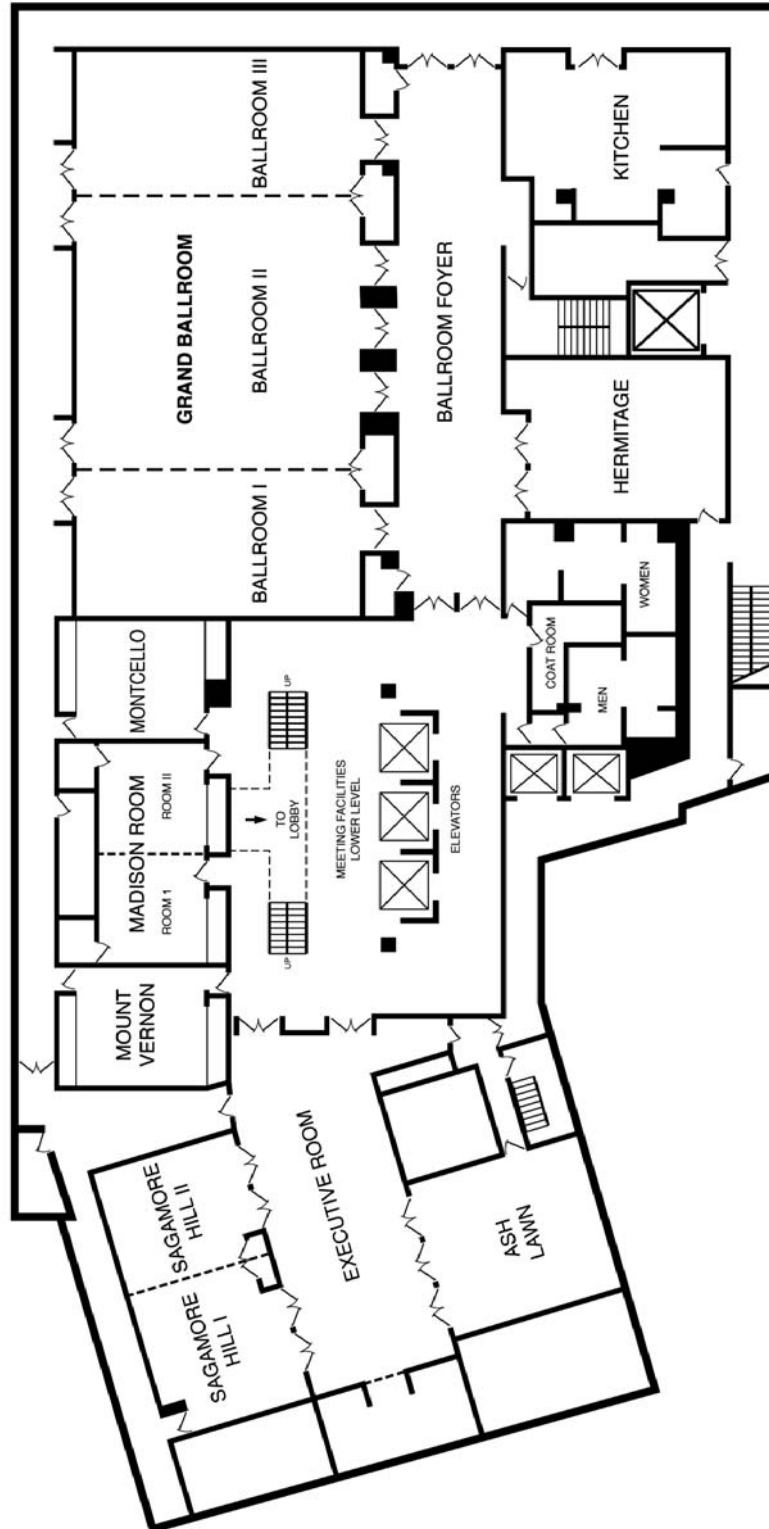
Substance Abuse and Mental Health Services Administration (SAMHSA)

11420 Rockville Pike
Rockville, MD 20857
Phone: 240-747-4817; Fax: 240-747-5466
Website: www.samhsa.gov

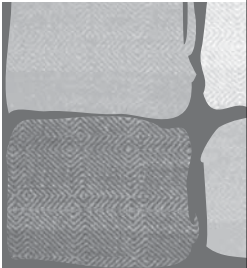
Conference and Meeting Space

WASHINGTON COURT HOTEL - LOWER LOBBY LEVEL

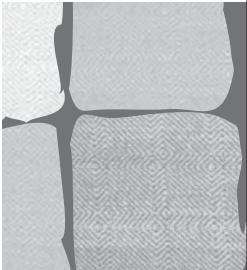
(all conference events take place on this level)



Notes



Notes



Notes

